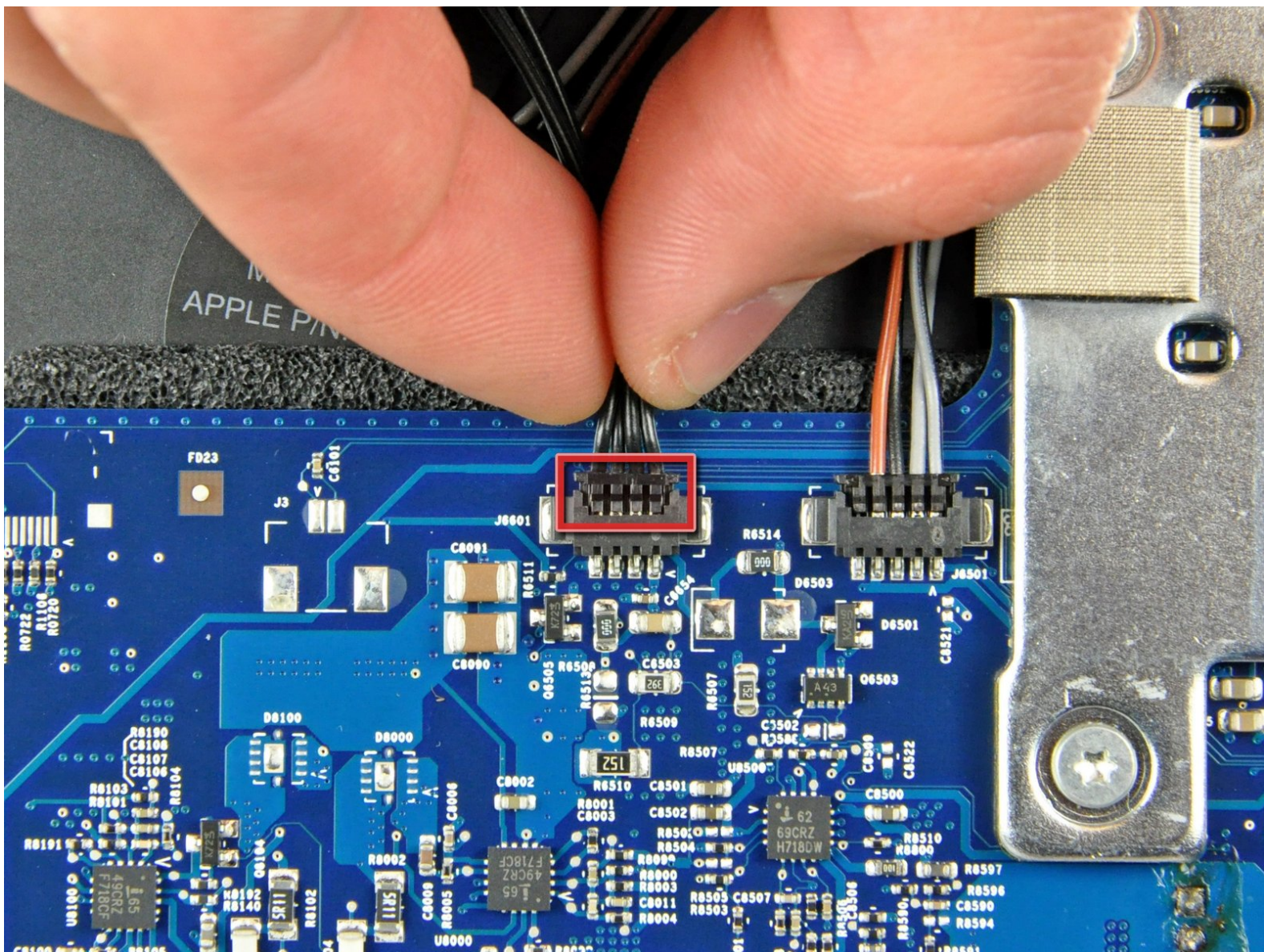




iMac Intel 20" EMC 2105 and 2118 Hard Drive Replacement

Written By: Walter Galan

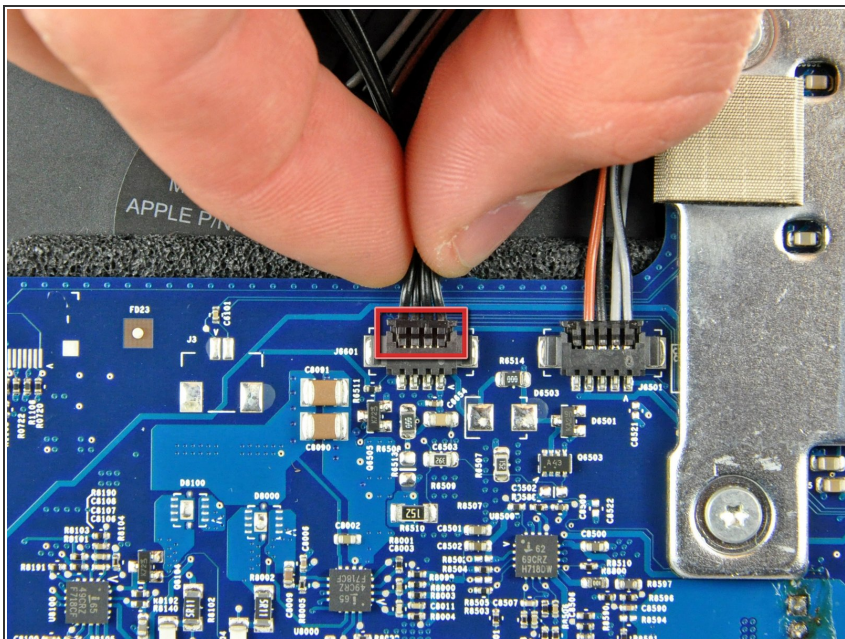




TOOLS:

- [T10 Torx Screwdriver](#) (1)
-

Step 1 — Hard Drive



- Disconnect the hard drive thermal sensor from the top edge of the logic board.
- ⓘ Pull the connector parallel to the face of the logic board.

Step 2



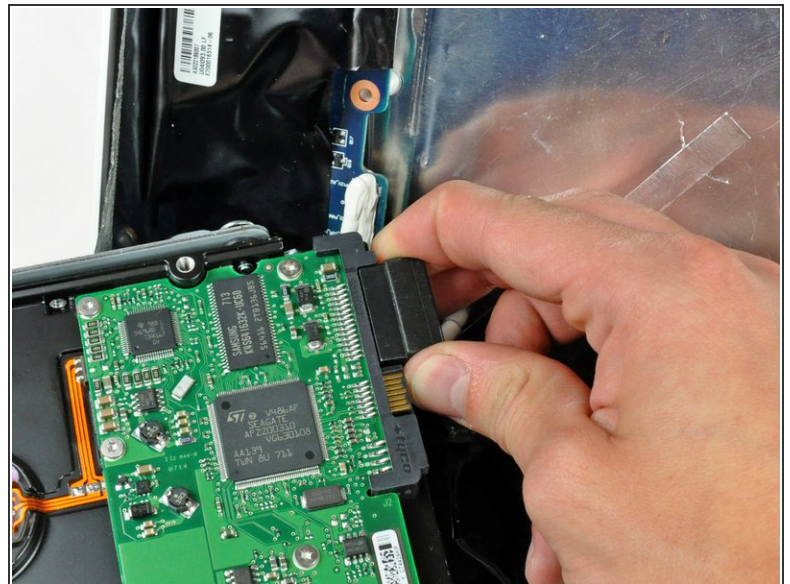
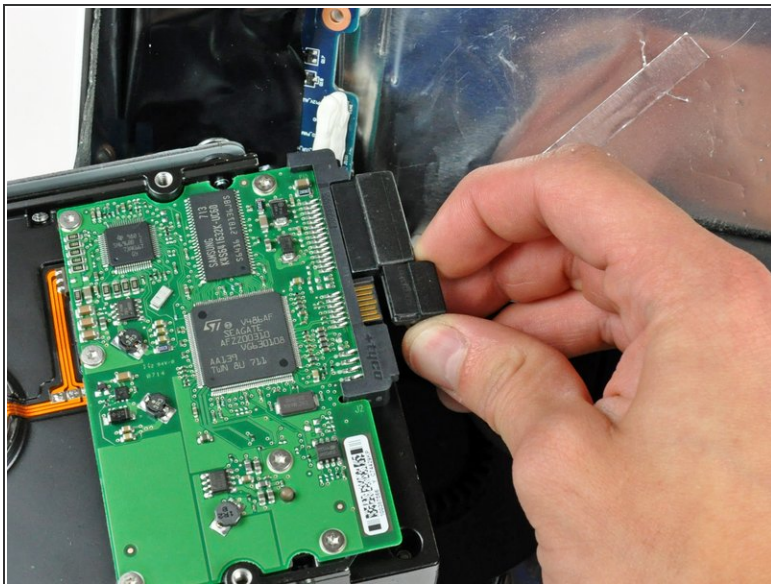
- Remove the two 9.2 mm T10 Torx screws securing the hard drive bracket to the rear case.

Step 3



- Lift the hard drive from its left edge enough to clear the inverter and pull it toward the left edge of your iMac to unseat the mounting pins from the chassis.
- ☑ During installation, do not push the rubber grommets through the chassis with the hard drive mounting pins as retrieving them will require removing the logic board.

Step 4



- Pull both the SATA power and data cable connectors away from the hard drive.

⚠ Be careful when de-routing the hard drive thermal sensor cable from under the heat sink framework.

To reassemble your device, follow these instructions in reverse order.